

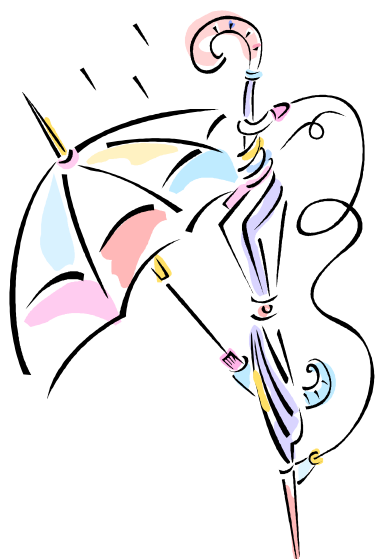
THE COUNTY CHRONICLER

Polk County Historical Society

April 2006

APRIL SHOWERS

BRING ANTIQUES



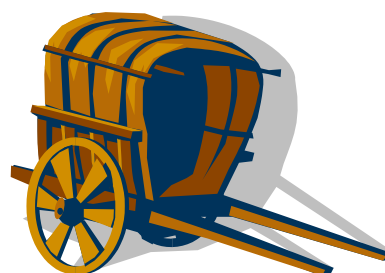
April 24 7:15 p.m.
Polk County Justice Center

Know Your Antiques

Everyone is invited to bring antiques to be valued by Linnea and Larry Phillipson, Tom Martin, and Mark Cellotti. Limit: two antiques per person

Refreshments will be served after the program

5:45 p.m. Board meeting



WISCONSIN
PIONEER / CENTURY
FAMILY CERTIFICATES

Page 2

PCHS MEMBERS TO VOTE ON ELEVATOR ADDITION

The general meeting of the Polk County Historical Society will vote on the proposed elevator addition at the April 24 meeting before the program.



WISCONSIN CENTURY FAMILY CERTIFICATE

HAS YOUR FAMILY BEEN IN WISCONSIN FOR 100 YEARS?

The Wisconsin State Genealogical Society issues certificates to persons who are directly descended from anyone who lived in Wisconsin at least 100 years ago.

The purpose of this project is to collect the history of Wisconsin families. Polk County genealogical and historical societies would like to have histories of our county families in this database and available at the museum.

Applicants must prove direct descent and prove that the ancestor settled over 100 years preceding the date of application.

Examples of the certificates and instructions for applying for them will be at the April Polk County Historical Society meeting.

You can download an application blank and directions at the Wisconsin State Genealogical Society website, www.wsgs.org.

Polk County Genealogical Society Members are happy to assist anyone in their genealogy work. kretweed@cornernet.com

Wisconsin State Genealogical Society Century Family Certificate

The Wisconsin State Genealogical Society takes pleasure in awarding this Certificate to the following descendant of a pioneer settler who lived in Wisconsin one hundred or more years ago:

Dale Edwin Wester

This Certificate is awarded in special tribute to the following ancestor(s) of the descendant, showing the County and the year of arrival in Wisconsin:

All settled in Polk County:

David Danielson and Eva Pehrson Danielson 1872 Peter H. Wester and Brita Ericksdotr Wester 1907
Johan Magnus Hailander 1871 Johannes Nilson Humble and Magreta Jonsdotr Humble 1872

Awarded this ____ 15th ____ day of ____ March, 2002 at Madison, Wisconsin

James Radloff
President

Virginia A. Nichols
Director





The last few weeks have been unusually cold which has made working in the museum almost impossible. Schools tours start May 3. We need to prepare the museum. Every able hand is appreciated. We want to be proud of our museum. Call Rosalie for dates and times: 493-3979.

LOOKING AHEAD

2007 Schedule

Date	Topic	
April 21	D.D. Kennedy Dedication	Spencer Black
April 24	Know your Antiques	Phillipsons, Martin, Celloti
April 28	Sportsman Show	St. Croix Falls
May 2 & 3	Osceola School Tour	135 Students
May 11	Clayton School Tour	90 Students
May 16 & 17	Frederic School Tour	60 Students
May 18	St. Croix Falls School Tour	75 Students
May 22	Filling Station/Car Museum	Erling & Betty Jensen
June 9	Bus Tour to Crex Meadow &	Forts Folle Avoine
June 26	Stereoscopes	Ralph Weber
June 30	Auction/Bake Sale	At Museum
July 25	Picnic	Dan Mosay
August 18	Big Band Dance & Dinner	Generation II
August 28	Rocks	Gladys Wickert
September 25	Early Canoes	Phyllis Knutson
October 23	Christmas in October	At Museum

Museum Directors Notes

My mother's words seem to be surfacing again and again these last few months, "patience is a virtue, Rosalie". I keep reminding myself that many things that once were a vision are now in place, such as the addition/elevator blue prints are approved by the county board and ready to go out for bids, and the funds for the addition are in the bank, and more money is coming in from our March donation letter.

In addition to our museum addition, the society was gifted \$30,000 for the Friends of D.D. Kennedy Educational Building by the generous foundation Marion Park & Gilbert Deaver. A replica building of the Kennedy Mill is completed and will be dedicated April 21, 2007. The Kennedy Society and Friends partners with the Polk County Historical Society in the school program "Land, Air, Soil and History" (LASH) offering school field trips. We have had five to seven school field trips a year for the last five years. We will now have this education building available for the education of conservation and history.

Please remember we are seeking donations for our auction to be held June 30, 2007. It will be on the museum grounds during Balsam Lake's Freedom Days. We are also asking for donations of cookies and bars to sell at the food stand.

Our June 9 bus tour will be to Fort Folle Avoine near Webster and Crex Meadows. The charge will be \$28.

Get your dancing shoes ready for the Big Band Generation II at the Tac August 18, 2007. Tickets will be available soon: \$25.00 and includes dinner and dance.

We need volunteers to host the desk during summer museum hours and hosts to serve lunch at our monthly meetings.

Your Director,

Rosalie Kittleson

ELEVATOR ADDITION DONATIONS 2007

- Alfred L. Reeves
- Amery Medical
- Amery True Value
- Andrie Electric
- Barbara Fossum
- Bremer Bank
- Centurytel
- Falls Orthodontics Cheryl Cermin
- Dresser Trap Rock
- Gene Johnson Construction
- Gold Star
- Greatmats.com
- James & Laura Eichten
- Jeff's Small Engine
- Johnson Drug Store
- Judy Westlund
- Kent Hedeem
- Nezben, Inc. DBA Loggers
- Osceola Community
- Patricia MacDonald
- SELH Society
- Sue Mathews
- The River Bank
- Wal-Mart
- Westconsin Credit Union

POLK COUNTY CIRCLE OF HISTORY

Monday April 23, 7 p.m.
Polk County Genealogical Society meets at the Osceola Library.

Russ Hanson will present a multimedia show "**What is New in Genealogy**" With his background in computers, he is always on the edges of technology and will emphasize DNA.

Wednesday April 25-Projected date *Stories of the Trade River Valley*

\$17.00 mail order to SELHS, Box 731, Cushing WI 54006.

Thursday April 26, 7 pm
St Croix Falls History Society
Meets at National Scenic River Headquarters **History of Cushing Wisconsin and its Most Famous Son, Dr. Squirt**

Thursday May 17 7 p.m.
SELHS meets at the Cushing Community Center Loretta Pedersen of Blackberry Hills will demonstrate hand spinning and weaving and natural dyes., www.blackberryhills.com

Polk County Historical Society
Board of Directors Meeting March 27, 2007

Call to Order: Vice-President Darrell Kittleson called the meeting to order at 5:45.

Directors Present: Darrell Kittleson, Ralph LaDuke, Carl Johnson, Art Young, Diane Dueholm, Dorene Hendrickson, Rey Lark, and Patty Young.

Directors Absent: Muriel Pfeifer, and Patricia MacDonald

Others present: Rosalie Kittleson

Agenda Additions: Carl asked about the Turtle Lake Expo, no information yet.

Secretary's Report: Was approved as printed in the newsletter.

Financial Committee Report:

David Knutson presented a committee recommendation that we switch to the accounting firm of Johnson, Agen, Kupferschmidt & Associates of Cumberland. This is the firm that the Barron County Historical Society uses. There have been some issues with tax reports being sent in late and fines levied with the previous firm. A motion was made by Ralph/Diane and carried to make the change. David offered to go to the April 21st Local History Workshop in Eau Claire. He would like the society to pay the registration fee and \$75 for vehicle expenses. A motion by Patty/Carl and carried to pay those expenses. The next Financial Committee meeting is on April 9th at 10:00 in the museum. All are welcome to attend; David brought to our attention that we have no board members serving on the committee.

Treasurer's Report:

\$9280.25 interest earned in 2006

Director's Report:

We have some grant money available that will allow us to hire Brian Voss, at \$25 per hour, to work in the garden and do some painting at the Lanesdale School. The East Lincoln school bell, (donated by Carter & Joyce Dedolph), that has been stored in the Lanesdale School will be moved to the garden at the museum. Their gift of \$100 will help pay the cost of material for a cradle, which Brian will make.

Affiliated Historical Societies:

A reminder that we are supposed to receive an annual report from each of the societies that operate under us.

Old Business:

Elevator/Addition (this must be voted on at the General Meeting)

There is \$207,000 in the building fund. Debbie Peterson told Rosalie during their meeting this week that the request for bids will be in next week's paper. Price would be \$70,000 for a 3-stop, 1 entrance elevator.

New Business:

1. Fundraisers:

- a. The third annual auction will be June 30 as part of the Freedom Festival.
- b. August 18 is the date for the dinner dance at the TAC. Generation II Big Band. A 12-piece band featuring singer Mary Lee will be providing three hours of music.

2. Stairway Rail

Some of the stairway rails at the museum are covered with paneling and we discussed removing the paneling to see if the original railing is still in place. Darrell will check it out for us.

3. Bead Board-Fine Arts Room

The windows in the Fine Arts Room are hidden behind metal panels and are not visible from the inside, but are unsightly from the outside. It will be a major job to cover them with bead board like the rest of the windows in the museum.

4. Carolyn Wedin Book-Special Fundraiser

This is a translation of a Swedish language book about Frederic. She is looking for monetary help to get the book published. Discussed ways to do this: we could have a specific fundraiser just for that, this idea was rejected. We could donate 10% of the proceeds of the food sales at the auction, this might have merit. We could dedicate some money for this and future requests from other societies, no decision. Tabled until next meeting.

5. Board members Attend State Level Events

Darrell would like board members to attend one workshop or convention each year.

6. Sportsman Show Display

This is April 28 at the Polk County Fairgrounds. Volunteers are needed to help.

7. Museum Roof-Spring

The County Board has approved the funding for this. Shingles are slate gray and will be installed by Vern Simon.

8. May Archaeology Month-Society Tours

Some societies are doing cemetery walks. Suggestions for us were the Bunyan and Balsam Lake cemeteries. Ralph LaDuke, Patty Young, Dorene Hendrickson, and Rosalie Kittleson were appointed to make contacts with possible tour guides. They will have a report at the next meeting.

9. Presentation (at General Meeting)

The Luck Society will receive a check for \$50,000 from the Hugh J. Anderson Foundation, which they applied for under the Polk County Historical Society.

10. Joint Societies Meeting

- a. a. Place mats: Muriel was not available for comment or questions.
- b. b. Walking tours: Russ Hanson will be hosting a cemetery walk for SEL.
- c. c. Another brainstorming meeting of all societies is needed to exchange ideas.

11. Bus Tour

Discussed changing day from Friday to Saturday, tabled until next meeting. The BUSeum will be at the Frederic Depot June 8-10 and will be part of the tour. We will visit the Fort at Webster and have lunch in Atlas. More details will follow.

12. April 24th Meeting

Antique appraisals will be featured in April. Because this is so popular we will ask that each person bring only two articles for appraisal. Adjournment at 7:00 on a Ralph/Carl motion.

General Meeting

Darrell called for a show of hands in favor of the elevator addition: it was approved.

Rosalie Kittleson recognized Judy Wester for her contributions to the Historical Society and her work at the Museum.

Darrell presented the check for \$50,000, to Chuck Adleman, of the Luck Society. Our honored guest, Helen McCann White, was presented with a plaque honoring her as History Woman of the Year, 2007.

Jay Bergstrand, Rey Lark and Darrell Kittleson each gave a very interesting presentation on their experiences in Alaska. The large crowd enjoyed a delightful evening.

POLK COUNTY HISTORICAL SOCIETY REACHES OUT TO THE COMMUNITY



Auction
June 30



Newsletter



Tours



Lanesdale School



Kennedy Park



Local History Speakers

Polk County Historical Society
Box 41
Balsam Lake, WI 54810



THE POLK COUNTY CHRONICLER

Page 1 April Showers
Page 2 Century Families
Page 3 Schedule
Page 4 Director's Notes
Page 5 Donations
..... Circle of History
Page 6-8 March Minutes
Page 9 Reach Out

I would like to become a member
of the Polk County Historical
Society:

Lifetime..... \$100
Yearly \$10
Students..... \$2

Name
Street
City
State & Zip.....
E-mail

Mail to: Rosalie Kittleson
 Box 41
 Balsam Lake, WI 54810