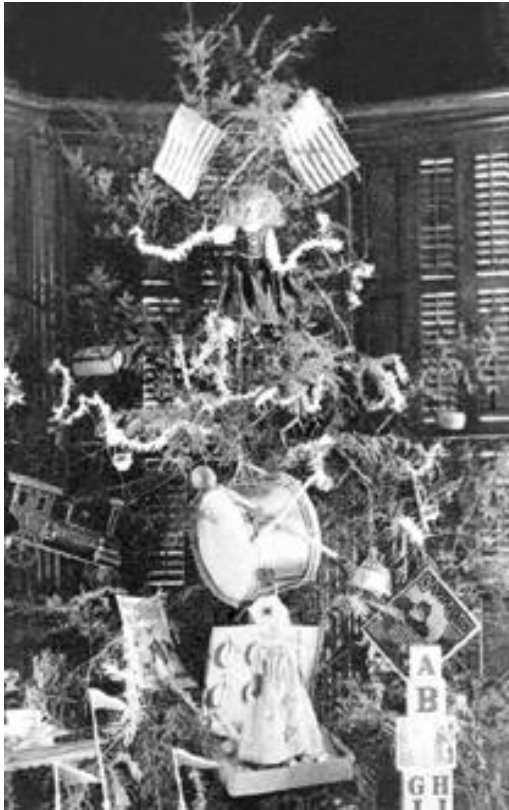


THE COUNTY CHRONICLER

Polk County Historical Society

October 2007

VICTORIAN CHRISTMAS TREE 1899



Tuesday, October 23, 2007

**PCHS Family Christmas Party
7:15 p.m.**

We encourage you to bring cookies and memories to share and perhaps an ornament to add to the museum's growing collection. Let's gather around the piano with Doreen Hendrickson and Christmas favorites.

<http://www.victoriana.com/christmas/christmas-tree.htm>

Our last meeting of the year provides an opportunity for you to visit your museum—come see the display changes and the ongoing construction.

Native
American Room's
New Indian Maiden

Liz Rettig, Frederic,
artist



Below is one corner of our newly remodeled Fine Arts Room. The stately grandfather clock is a gift from Martha and Louie Filip of Luck, Wisconsin.



ST. CROIX / TAYLORS FALLS – SUPERIOR CANAL TOO EXPENSIVE

In 1875 the villages of Taylors Falls and St. Croix Falls were all excited about the prospect of having a canal built. Early 1680 pioneers told of paddling their canoes from Lake Superior and using the Mississippi River for their journey to New Orleans. Little did they know how many obstacles stood in the way.

The elevation of Lake Superior compared to the hills in between made it necessary to pull canoes up some streams to gain elevation necessary to paddle down different streams.

In 1875 Minnesota legislature voted \$2380.62 to pay for surveys. R.R. David, F.L. McKusick, and Joe McKennon started out in October 1875, but froze in as winter grew colder.

The following surveys were made for this canal: one up the St. Croix to the Namekaon thence to the White River, a little over 100 miles. One route up the Kettle River and another using the St. Clouis River. Because water does not travel up hill, a series of dams and locks would be made thereby doubling the length of the canals.

The surveyors were very careful in their reports. They measured every foot of the way noting where streams were wide and narrow, and types of soil in each section. Elevations were very important. Canal builders find extra streams useful in building and filling locks and dams. The route up the Namekagon to the Brule was the shortest and perhaps the best route.

The next problem was for the legislatures to provide funds for building canals. There was a very poor harbor at the head of the Brule. It just seemed the expense of building was far too great for their budgets. Would there be enough freight moved along any one of these canals to make it worth the money?

The decision was made that the project would be too expensive because there would probably not be enough freight to move along these canals to make it worthwhile.

Today the Kettle River is one of the best white-water rivers in North Central U.S.A., and the St. Croix and Namekagon Rivers provide 252 miles of clean water gliding past lush green landscape and a wealth of scenic views rounded by wooded bluffs and abundant wildlife. Who would want it any different?

**POLK COUNTY
GENEALOGICAL SOCIETY**

Monday, October 22, 7 p.m.

Osceola Public Library

Wally Milbrath

“Wisconsin, the Civil War and
Genealogy”

Monday, November 26

Barb Oestreich

“Writing your Family History”

**LUCK HISTORICAL LIBRARY
AND MUSEUM**

The Luck Library and Historical Museum project is on track with a projected opening in spring of 2008. Most of you now know that we have reached our fundraising goal of \$1,000,000. The Luck Village Council recently opened construction bids and chose the low bid submitted by Clark Construction

Company of Luck. Groundbreaking is planned for the middle of October in order to get the building well under way before winter weather arrives.

The Luck Library and Museum Committee have planned a Harvest Dinner (and ground breaking celebration) for 5:00 to 7:00 P.M. on Saturday, October 20 at the Luck Fire Hall. There will be live and silent auctions of new and used items (including an official jersey signed by Brett Favre) following the dinner. The menu includes roast pork on a bun, wild rice casserole, squash, coleslaw and desert. Prices are \$8 for adults, \$5 for kids 4-10; kids 3 and under eat free.

You are all invited to help us celebrate a new page in Luck's history.

ELEVATOR ADDITION FINANCIAL INFORMATION

Elevator Addition Funds	
Building Fund CD	\$170,366
Fred C. & Katherine B. Andersen Foundation Grant	50,000
Building Fund Checking Account	43,000
Endowment Fund Collateral	45,000
Total Funds Available	\$308,366

Elevator Addition Anticipated Expense	
Construction Cost	\$297,000
Elevator Balance Due	45,000
Endowment Loan	45,000
Estimated Total Expense	\$387,000

FROM THE DESK OF THE PRESIDENTMURIEL PFEIFER

The Polk County Historical Society Board held its board meeting prior to the general meeting on September 25. The SELS Society has still not sent in their annual report for 2006. The board has directed me to contact them.

Committee reports:

The Finance Committee again presented their idea for offering a \$500 scholarship to a graduating Polk County Senior. It was suggested that the Scholarship Committee write up criteria for the application and bring it to the board. We approved their proposal to increase by 3% for Rosalie and the coordinator will still be \$2,000. We discussed upgrading the computer at the museum and buy the new program: Past Perfect. Continue discussion at the next meeting.

The Property Committee was represented by Darrell Kittleson. He told us of a problem with the windows by the door of the elevator addition. He made a judgment call to make them a little smaller so they would be above grade. Darrell will be the point man to Chris Nelson (General Contractor) to come to when a problem comes up and a quick decision needs to be made.

Membership Committee had met and they reviewed the list of members. A post card was sent to all whose membership has elapsed. There have been many memberships which were paid quickly as a result.

Fundraising:

Rosalie handed out a Balance sheet for each of the following fundraisers:

	Profit
Bus Tour	\$ 276.00
Auction	2,688.17
Dinner/Dance	5,422.60

Nominating Committee:

There are five (5) members of the board whose terms expire this year: Carl Johnson, Darrell Kittleson, Ralph LaDuke, Muriel Pfeifer and Patty Young.

Museum

Next year Judy will be a greeter M-F and we are looking for volunteers to help out on the weekends. Everyone needs to take a turn, if they can, or make a recommendation of someone who would be able to help out.

NEWS FROM THE DIRECTOR'S DESK,

My first thoughts are of thankfulness. Thanks for the beautiful rain and for the new roof on the museum that is keeping everything dry; a year of interesting programs and wonderful treats from the volunteers who served through the year.

We are about five displays away of having all the second-floor displays changed and cleaned—again thanks to volunteers.

This spring the garden project started with St. Croix Fall's students and teacher volunteering hours of labor making the way easier for our volunteer ladies to finish the project. The garden was the most attractive it's ever been. It truly is a showcase of many different flowers that were shared from many gardens.

Artifacts are being catalogued and placed in storage as they come in weekly—thanks to volunteers.

We receive a newsletter each month giving us the latest upcoming events, photos of the past and present and good articles about history—thanks to volunteers.

Whether it's floors mopped, windows washed, food served, auction prepared for, fund raisers planned and carried out, it all happens with the help of volunteers.

Last but not least, I am thankful for Mitchell Vezina, our Experience Worker, he came in this summer to fill the big shoes of Jim Gisch and Dave Knutson. He is making a difference daily in our air exchange and many other projects for the museum. Jim is continuing to volunteer with the century farm signs.

How many times did you read the word volunteers? My point is volunteers have made a difference in our society, our community and our museum. Please take a well deserved thank you from a very proud and lucky director.

September 4th was the ground breaking for the addition. Workers moved quickly digging the hole, removing dirt, pouring cement, building block walls, and now we can see the beginning of the addition.

We had three private tours this September, Elaine Erickson and friends, St. Croix Valley Christian School, and the St. Croix Falls Lioness.

Our September speaker, Phyllis Knutson, gave a terrific presentation covering a large range of fiber art from Scandinavian basketry to the making of Native American birch-bark canoes. We've had a lineup of wonderful speakers but very disappointing attendance at some meetings. Maybe it is time to question the wisdom of monthly meetings with outside speakers.

The Oakey Dining Room display is in need of silverware for the two-piece table setting. It would be a nice gift to receive at the October Christmas party.

We received a wonderful gift of \$50,000 from the Fred C. & Katherine B. Andersen Foundation, Bayport. This makes our debt for the addition much lighter, but we are still short approximately \$80,000. We will continue with seeking grants and fundraiser for 2008.

We appreciate every gift, large or small toward our ongoing expenses. The following have been received recently:

Memorial for President Muriel Pfeifer's sister, Janet Feder.....	\$10
Millie Addy, Osceola, for use in Military Room.....	\$500
Joyce & Joyle Anderson, Amery, for vacuum cleaner	\$20
Lester and Marion Swanson, St. Croix Falls, for vacuum cleaner	\$10
Art Everson, Osceola, for postage	\$10
Joan Chaffee, Luck, for Native American Room LED lights	\$20
*Joan's husband donated the eagle in Native American Room	

Elevator Fund

Dennis Frandsen, Rush City, MN (originally Luck, WI)	\$1,000
Donovan Rasmussen, Dresser.....	\$1,000
Fred C. & Katherine A. Andersen Foundation	\$50,000
Excel Energy for Light Emitting Diode (LED)	\$750

We hope to see you at our Polk County Historical Society Family Christmas in October. We will have the election of board members.

Happy Holidays and a Blessed Christmas to you all,

Rosalie

DISPLAY OVERVIEW

Museum director, Rosalie Kittleson, and assistant, Judy L. Wester, along with Martha Fillip, spent a day critically assessing the museum and brain-storming ideas for improvements. The visitor's comments about the museum are always positive, but there is always room for improvement. We want to include you in this process. There is wisdom in many counselors, and we'd like to hear your opinion. Our October meeting at the museum is a good time for you to come and analyze our ideas.

The following are ideas that we covered starting with the basement and working up:

1. Hardware store (northwest room)
 - Move Cushing post office artifact to west wall. The Osceola post office artifacts in narrow hallway must be moved to enlarge it for wheelchairs, we propose to include this on west wall in hardware store.
2. Main first floor hall display (presently fishing and hunting)
 - Replace with surveying and first county newspaper from logging room.
3. South display in village square
 - Change to look more like a storefront adding fishing and hunting from hall display.
4. Medical-barber/beauty shop
 - Move out barber/beauty items and make beauty/barber shop in village square. Move wheelchair into medical display.
5. Native American
 - Build rounded back wall and have painted Native American background based on local photos.
6. School/Community room
 - Move teacher mannequin from small display directly inside door to display behind teacher's desk and add other school items. Gradually change community displays to make them portable.
7. West half of storage room
 - Make display area with looms, sewing machines, quilts, and other handwork
8. Court room
 - Looms, handwork, etc., will be removed; original court room chairs will be replaced.

Polk County Historical Society
Box 41
Balsam Lake, WI 54810



THE POLK COUNTY CHRONICLER

Page 1October Christmas Party
Page 2 St. Croix/Superior Canal
Page 3 Circle Of History
..... Addition Financial Update
Page 4 President's Letter
Page 5,6 Director's Letter
..... Thank You to Volunteers
..... Thank you for Monetary Gifts
Page 7 Displays Overview

darose@centurytel.net

I would like to become a member of
the Polk County Historical Society:

Lifetime..... \$100
Yearly \$10
Students..... \$2

Name
Street
City
State & Zip.....
E-mail

Mail to: Rosalie Kittleson
Box 41
Balsam Lake, WI 54810

<http://www.communityhotline.com/PolkCountyMuseum/news.htm>