

# THE COUNTY CHRONICLER

## Polk County Historical Society

March 2008

### ALASKA PART II

ALASKA IN PICTURES AND STORIES  
Darrell Kittleson & Eldred  
Anderson



Tuesday, March 25, 7:15 p.m.

Polk County Justice Center  
Refreshments served after program  
Board meeting at 5:45 p.m.



New-addition doorway to  
1<sup>st</sup> Floor Galleries



**2008 MURIEL PFEIFER**  
**HISTORY WOMAN OF THE YEAR**

Polk County Historical Society recognizes Muriel Pfeifer as the recipient of the Polk County's Women in History Month Award. We honor her for the many years of preserving the history of Polk County through her teaching, research, and writings.

### PCHS PAST HONOREES

2003 Marge Hallquist  
2004 Elsie Wood  
2005 Leona Cunmmings  
2006 Rosemarie Vezina Braatz  
2007 Helen McCann White

## **MURIEL ELAINE MORGAN PFEIFER**

Muriel was born and raised in Minneapolis, Minnesota, one of four daughters of Charlie and Marvel Morgan. It was during the depression era and money was very scarce. From an early age the family took advantage of free lectures and tours sponsored by the University of Minnesota. This sparked her interest in history and natural history which she continued into her adult years.

During her college years she took as many elective history classes as she could because she had decided to be an elementary teacher. Her career in education began at Hibbing, Minnesota, followed by Hermantown, Minnesota; Crown Point, Indiana; Osceola, Wisconsin, and her last assignment was Mahtomedi, Minnesota. Each time she was assigned to the fourth grade. Her curriculum included history of that state, and she would visit the local history sites, read many books of the area, and attend lectures to prepare herself for presenting the history to the students.

In 1971 she moved to Polk County and felt she needed to find out about the area and its history. She began reading about the area from books from the library and started to visit sites of interest in the area.

After retirement she spent the first two years traveling, and then decided she wanted to be a part of the Polk County Historical Society and the Genealogical Society. (These two seemed to go hand in hand.) She also works part-time at the Polk County Information Center and is constantly amazed at the history/genealogy questions that are asked there.

One question especially caught her interest, and she began to gather information about the small “towns” that have been important to Polk County. She felt the stories about these “towns” needed to be preserved before everyone who knew about them had passed away. Thus began a four-year research and the publishing of her book “A Whisper in the Wind.”

She continues to do research and is in the midst of two current projects. One confirming the burial sites of veterans of the Civil War and making a comprehensive list, and the second is researching the history of the Polk County Fair. These two projects are taking up most of her time and will culminate in publications of some sort.

Muriel is also a member of the Daughters of the American Revolution, Daughters of Union Veterans of the Civil War, Delaware and Ohio Genealogical Societies, and the Amery and St. Croix Falls Historical Societies. She continues to learn about our history and is passing on her interest to her four children: Todd, Tom, Tim and Tanya.

## MEMORIALS

**LeRoy Schwan**, a long-time PCHS member, passed away October 22, 2007. A beautiful service was held October 26<sup>th</sup> at his home church, the Assumption Catholic Church at Farmington, Wisconsin. We appreciate all the work that LeRoy did for our organization, his art work, serving on the board for many years, helping with the programs, and hosting at the museum. The LeRoy Schwan estate gave \$1,000 to the society to use wherever needed. Gifts were also received from Marge Hallquist, Darrell and Rosalie Kittleson, and Phyllis Gabrielson, in his memory.

Our museum employee of many years, **Jim Gisch**, passed away while cleaning the shoreline of his much-beloved home on November 17, 2007. Jim is responsible for many improvements in the museum. We will include pictures in an upcoming newsletter. Larry Behne gave a monetary gift to the society in Jim's memory.

The Balsam Lake Senior Citizens gave in memory of **Arlee Hansen**.

**Lloyd H. Johnson** died Friday, Jan. 25, 2008 at his home. Lloyd worked for over 40 years with the society, many years on the board. He attended state activities, maintained the museum farm room, donated artifacts, accompanied and assisted Willis Erickson in acquiring artifacts, donated the 1900-era light posts in museum front, wrote and assisted in writing histories of church, family and community. Lloyd and Eleanor gave many monetary gifts, were dependable volunteers serving as host and hostess at the museum and serving lunch after our meetings.

The many members of the historical society join in extending our sympathy to the families of Leroy, Jim, Arlee, and Lloyd.

## GRANTS AND GIFTS

We are extremely thankful for the following grants that we've received for the elevator addition:

Hugh J. Anderson Foundation	\$30,000
Hardenbergh Foundation	\$20,000
Amery Community Foundation	\$500

The following gifts/grants were given for special projects:

St. Croix Valley Community Foundation gave \$1,600 for PastPerfect Software to manage the museum's collections.

Brad and Sue Johnson, Lloyd's son and daughter-in-law, gave \$100.

AnnMarie Foundation (Phillips Plastics Corporation) gave \$600 for lap-top computer.

Carter and Joyce Dedolph gave \$50.

WITC, New Richmond, gave us a slightly used computer, keyboard, screen, and printer.

Clayton and Elsie Wood offered silverware set for Oakey Dining Room.

**POLK COUNTY HISTORICAL SOCIETY EXECUTIVE BOARD MEETING  
HIGHLIGHTS  
OCTOBER, 2007**

- Darrell, Rosalie, and Muriel will attend The Conference on Historical Preservation October 26-27<sup>th</sup> in Eau Claire.
- It was decided to have a yearly cap of \$300 for historical sign expense.
- The following fund raisers are planned for 2008:
  - April – Rendezvous at D.D. Kennedy Park
  - June – Dedication and car show
  - July – Freedom Fest food tent and flea market
  - August – Dinner Dance
- Darrell Kittleson will be program director for 2008.
- Judy L. Wester will work Monday through Fridays as hostess at the museum.
- Patricia MacDonald volunteered to hostess Sundays in July and August.
- The museum will be open on weekends in September and staffed by board members.
- There will be no admission charge for the month of June; free-will donations will be encouraged.
- Rosalie is hosting a Volunteer Appreciation Dinner for Monday, November 12<sup>th</sup>.
- Darrell Kittleson was elected president with Ralph LaDuke vice-president.

**Polk County Historical Society Executive Board Highlights  
January Meeting**

- The membership committee was reminded that annual membership dues run from January to January. They were asked to mail a letter or postcard to members.
- March is Women History Month. The board chose to recognize Muriel Pfeifer.
- The bids for painting the windows, doors, tower, and fire escape will be handled by the county this spring.
- Professional cleaning of the rooms and hallways of old part of museum will be done before opening of our regular season.
- Darrell will look into the sign for the north exterior wall of the new addition.
- Our first newsletter will have a flyer and mailer bag for the recycling ink cartridges.
- Rosalie's contract will be discussed at the March meeting.

**2008 Wisconsin Historical Society Spring Workshops**

The Quilts in Your Museum Collection	April 4, 2008
Starting Your Strategic Planning Process	Monday, April 14, 2008
Utilizing Your Institution's Photographic Resources	Monday, May 12, 2008
Marketing on a Shoestring Budget, Monday	May 19, 2008

## **Greetings Friends,**

This is a new year, a new president, and hopefully, a new and exciting era for Polk County Historical Society. Our new addition is progressing full-speed ahead and will be ready for us to take over late spring of this year, 109 years after our original building was erected. The elevator will be installed very soon, wow, who would have ever dreamed that everyone will be able to see all three floors of this wonderful facility. Our friends of Polk County Genealogy will be given some space to use for their storage and research area.

The PCHS Board of Directors met January 12<sup>th</sup> with a very full agenda. Our four subchapters: Luck Historical Society, St. Croix Falls Historical Society, Sterling-Eureka-Laketown Historical Society, and Polk County Genealogy have been notified of their responsibilities to PCHS as requirements of a chapter. A committee was formed to explore purchasing place mats to be placed in area restaurants. Our spring programs for our one-room schools were discussed and we will need to do all day scheduling rather than half days. We are expanding our outreach every year. Several other topics were discussed, look for highlights in the director's report.

Our eight-meeting schedule of programs is pretty well booked now. The list is as follows:

March 25<sup>th</sup> Alaska Part 2 Darrell Kittleson and Eldred Anderson with lots of pictures & stories back many years

April 22<sup>nd</sup> Know your Antiques. Larry & Linnea Phillipson & Friends will be doing the appraisals on your treasures.

May 22<sup>nd</sup>. The World of Vaseline Glass. Nationally known collectors, Gordy & Sandi Hibbs, will tell us about the fine art of collecting & showing Vaseline glass.

## **June Bus Bour Spooner train ride, carving – June 13, 2008**

June 24<sup>th</sup> at D.D. Kennedy Park Picnic. Speaker, Bill Pfannes, Dresser Junction resident, will do the program on "The Soo Line". Bill, former railroad employee, brings to life a huge part of Polk County history through stories.

July 22<sup>nd</sup>. History of Wisconsin's involvement in the Civil War. Michael J. Martin, author of *A History of the 4<sup>th</sup> Wisconsin Infantry and Cavalry in the Civil War*, will be our presenter.

August 26<sup>th</sup> will be our second picnic meeting of 2008. Chief Dan Mosay will again be our presenter. This year's subject will be The Meaning of the Dances.

September 23<sup>rd</sup>. A talk about the New Garfield Park on the shore of Lake Wapogasset.

Oct. 4<sup>th</sup> (Saturday) will again be a show day for early Christmas at the Museum

We hope to host a grand opening of our new addition. We can all be very proud of our accomplishment of this project. Remember to invite all your family, friends, and neighbors to join us at our meetings and visit our Museum.

President, Darrell

### **Directors Notes**

I will be starting my sixth year at the Polk County Museum as director. My goal when I first started was to correct many of the building's maintenance problems and the list was high. I believe with volunteer help and financial support from the county and foundations we accomplished many of desired needs, such as new insulation (2003 -04), new roof on coal room (2006), removed attic residents, new roof on the building (2007), sorted and organized treasurers and junk in many storage areas, and last and most importantly corrected some of our air problems. We were then ready to move on to the 1,857 square-foot addition with elevator. A project of no simple solution, but the funds were raised through volunteers, fund raising, grant writing, book sales, and community donations. Ground breaking on September 4<sup>th</sup> was the beginning of the history of our elevator at our downtown Balsam Lake Main Street Court House Museum.

I would like to say that we are all finished with grant writing and fund raiser, but now it is time to think about flooring, climate control, furniture and other expenditures not budgeted in the construction of the building. So I appeal to you as members to help us reach funds to meet these new items of our new addition. If you want to make a contribution for history this is the time when we really need it.

We continue to serve you and look forward to your visit in our new handicap-access-able addition serving all ages on all floors.

Ending Balances of Dec 2007 PCHS Funds			
Regular checking	\$ 3,073.29	Building Fund checking	\$28,806.29
Money Market	\$ 9,506.60	Building Fund CD	\$170,366.21

Museum Operation Budget for 2007: \$14,800. There is no carry over to 2008.

Rosalie Kittleson, Director

## Polk County Historical Society Board Members for 2008

Joyce Bergstrand      2010      268-9523  
 750 S White Ash Ct   Balsam Lake   54810  
[jbergstr@amerytel.net](mailto:jbergstr@amerytel.net)

Diane Dueholm      2008      472-8365  
 904 State Road 48      Luck      54853

Dorene Hendrickson      2009      405-3354  
 912 West Main St      Balsam Lake      54810

Carl Johnson      2010      268-8353  
 307 West South      Amery      54001  
[carljohnson@amerytel.net](mailto:carljohnson@amerytel.net)

Darrell Kittleson      2010      483-3979  
 1141A- State Rd 65      Amery      54001  
[darose@centurytel.com](mailto:darose@centurytel.com)

Ralph LaDuke      2010      857-5334  
 1852- 100<sup>th</sup> Street      Balsam Lake      54810

Patricia MacDonald      2009      472-4991  
 1185-240<sup>th</sup> Avenue      Luck      54853

Muriel Pfeifer      2009      268-6578  
 5 Dickey Avenue      Amery      54001  
[mpfeifer@amerytel.net](mailto:mpfeifer@amerytel.net)

Larry Lee Phillipson      2008      268-7929  
 1027 85<sup>th</sup> Street      Amery      54001  
[bunnytrail@amerytel.net](mailto:bunnytrail@amerytel.net)

Helen Stoltz-Wood      2009      715-386-7537  
 726-Seventh Street      Hudson      54016  
[hs35@uwrf.edu](mailto:hs35@uwrf.edu)

Art Young      2008      485-9743  
 630 Park Drive      Balsam Lake      54810  
[probbinsyoung@lakeland.w](mailto:probbinsyoung@lakeland.w)

Patty Young      Secretary      485-9743  
 630 Park Drive      Balsam Lake      54810  
[probbinsyoung@lakeland.ws](mailto:probbinsyoung@lakeland.ws)

Lois Hoff      Treasurer      485-9241  
 209 Idlewild Drive      Balsam Lake      54810

[loismhoff@yahoo.com](mailto:loismhoff@yahoo.com)

### Duty Roster

Darrell Kittleson, President  
 Ralph LaDuke, Vice President  
 Patty Young, Secretary  
 Lois Hoff, Treasurer  
 Darrell Kittleson, Program Director  
 Rosalie Kittleson, Museum Director  
 Linnea & Larry Phillipson, Curators  
 Judy Wester, Chronicle Editor  
 Marge Hallquist, Historian & Librarian

### Membership Committee

Carl Johnson  
 Ralph LaDuke  
 Muriel Pfeifer

### Property Committee

Joyle Anderson  
 Dorene Hendrickson  
 Darrell Kittleson  
 Ralph LaDuke

### Finance Committee

Merle Bergren  
 Carl Johnson  
 Fred Salmon

### Scholarship Committee

Elaine Erickson  
 Helen Jacobson  
 Patricia MacDonald

### Directors Emeritus

Myron Daellenbach

# Make A World of Difference...



## Recycle Used Ink Jet Cartridges and Retired Cell Phones For A Better Tomorrow

We as concerned citizens believe that one of our responsibilities is to help keep our environment clean within our community. In an effort to place fewer plastic products into our landfills we are partnering with AAA Environmental, Inc. to institute an ***ink jet cartridge and cell phone recycling program.***

The use of ink jet cartridges and cell phones is increasing rapidly. This recycling program has been developed for the Polk County Historical Society as a fundraising program. We will be using postage paid recycling envelopes to recycle expended ink jet cartridges and retired cell phones. Please place your expended ink jet cartridges or retired cell phones into the postage paid recycling envelope that is coded to Polk County Historical Society and send it off to the recycling center.

We believe this to be an excellent way to clean up our environment and do our part in keeping unwanted plastics out of our landfills and to help conserve priceless, non-renewable resources. Please do your part in helping to recycle ink jet cartridges and cell phones that are used internally and also used personally by you or your family, neighbors, friends, etc., from anywhere in the United States. AAA Environmental, Inc. will be paying our organization money for every good condition ink jet cartridge or cell phone, suitable for remanufacturing, that we send to the recycling center. This added feature makes this program even more attractive.

Anyone interested in participating in this recycling program may obtain additional envelopes by contacting me at **715-268-6578**.

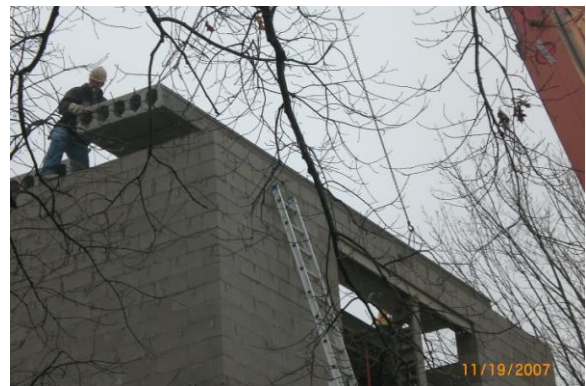
Together We Can Make a Difference.

Sincerely,

Muriel Pfeifer  
Polk County Historical Society



**POLK COUNTY MUSEUM ADDITION  
NOVEMBER 2007  
SETTING THE PRE-STRESSED CONCRETE PLANKS**



Polk County Historical Society  
Box 41  
Balsam Lake, WI 54810



## THE POLK COUNTY CHRONICLER

Page 1 ..... March 25 Meeting – Alaska  
Darrell Kittleson & Eldred Anderson  
Page 1-2..... March History Woman  
Muriel Elaine Morgan Pfeifer  
Page 3 ..... Memorials  
Page 4 ..... PCHS Board Highlights  
Page 5 ..... PCHS's President's Notes  
Page 6 ..... Director's Letter  
Page 7 .... PCHS 2008 Board Members  
Page 8 ..... Recycling Project  
Page 9 ..... Museum Addition Pictures

[darose@centurytel.net](mailto:darose@centurytel.net)  
<http://www.PolkCountyMuseum.com>

I would like to become a member of  
the Polk County Historical Society:

Lifetime..... \$100  
Yearly ..... \$10  
Students..... \$2

Name .....  
Street .....  
City .....  
State & Zip.....  
E-mail .....

Mail to:     Rosalie Kittleson  
               Box 41  
               Balsam Lake, WI 54810