

THE COUNTY CHRONICLER

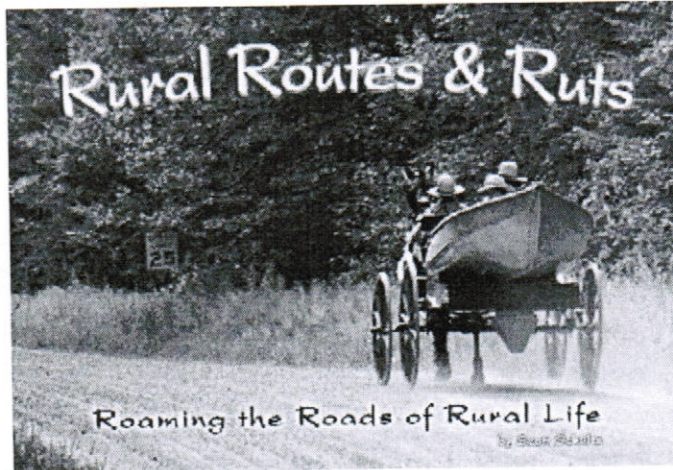
POLK COUNTY HISTORICAL SOCIETY

2005

August

JLW

August 23rd, 7:15 p.m.
Justice Center, Balsam Lake



SCOTT SCHULTZ, author of *Rural Routes and Ruts, Roaming the Roads of Rural Life* will be our guest speaker.

A heartwarming look into the lives along the "rural route"... Stories about the land and the people who choose to make a living from the soil.

Writer Scott Schultz captures the essence of the rural lifestyle that is rapidly disappearing. His stories talk about the family farmer and the struggles and triumphs that he has to deal with throughout the years.

Coming
Special Elevator Issue
October

Do you think The Polk County
Museum in Balsam Lake needs an
Elevator?

The purpose of the September Issue of THE COUNTY CHRONICLER will be to share suggestions, plans, budget and questions concerning the edition of an elevator, handicapped bathrooms and air quality storage area for the Courthouse Museum in Balsam Lake.

Draw your idea out and it will be included in the September County Chronicler.

Ask your questions about the proposed addition to the east of existing north storage rooms.

What are your concerns about the future problems that could be encountered with the proposed addition?

Do you have an architect, contractor or anyone one else that you would like to work on the project?

The entire membership needs to support this major project. The time to discuss it is now and every member needs to have the opportunity to voice his/her opinion.



Larry and Linnea Phillipson
Museum Volunteers and Curators

Larry and Linnea Phillipson live a few miles outside Amery. They both grew up on farms in Wisconsin. They have a dog, cat and lots of wild animal visitors to their feeders and garden. Linnea tends the flower gardens while Larry is usually refurbishing some antique instrument or Edison phonograph for eventual sale.

As with every parent, their son, Sandin, is their pride and joy. He is a PhD geologist, lives in WVA and works for Uncle Sam in the Mine Safety and Health department which monitors every mine (coal, silver, aggregate, gold, etc.) in the United States.

Larry is a Marine Corp Iwo Jima Vet from WWII. He grew up with an appreciation of history and antique objects. He received an Arts degree at Rock Valley College in Rockford, Illinois. Linnea attended UW Eau Claire with her minor in art. Larry has had many occupations, including making electrical components, working at

automobile and airplane factories and as a professional roofer.

His love of music gave him a career writing, singing, playing guitar and making violins. He has had shows on radio and TV from Wisconsin to Florida. His old 45 records are still traded on eBay and his songs still get played all over the world. When he was inducted into the Rockabilly Hall of Fame he decided it was time to write an autobiographical book and put out a CD of his songs. Since then, he has been written up in music magazines from Sweden, Germany and Australia where country and rockabilly music is still much in vogue.

Larry and Linnea have been in the antique business since the 1980's. They used to set up forty antique shows a year throughout the Midwest. Now they sell only on eBay. They are happy to be of some help to the museum as curators. Larry says that learning about and evaluating antiques is pretty much a never-ending learning experience. Values and prices of an article may vary with time and location. Some things are worth more today than last year and some are worth less because of popular demand diminishing. They both feel that the Polk County Museum is a wonderful place to honor the pioneers of Wisconsin by learning about their life and remembering the sacrifices they made while trailblazing their way through hardships so future generations could have the rich and better life we enjoy today.

If you are interested in more background, here are two websites to pursue:

www.rockabillyhall.com/LLPhillipson.html
www.spacestar.net/users/lphillip/music.html

You may

send your

suggested

plans to:

Polk County Museum

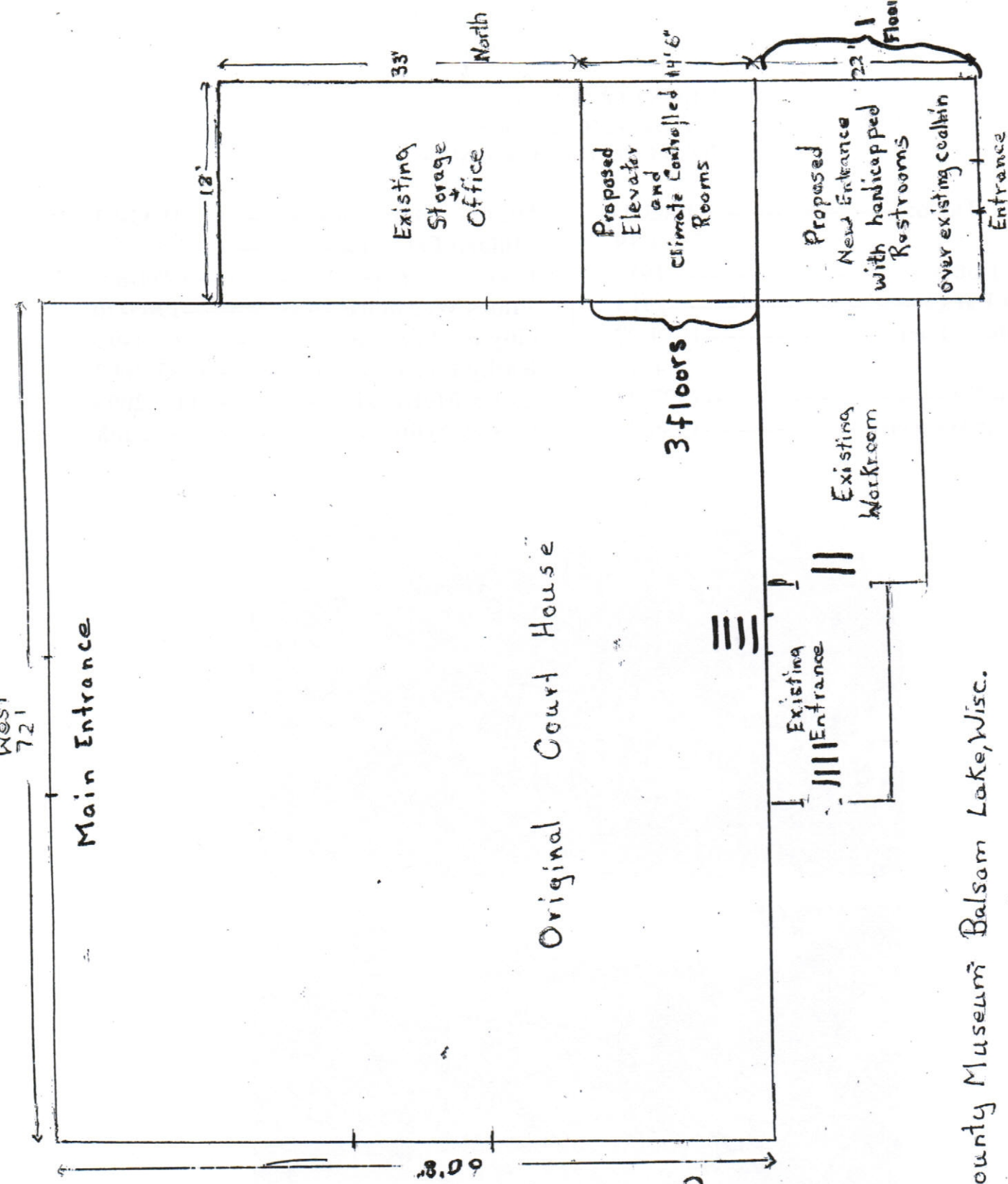
P.O. Box 411

Balsam Lake WI 54810

Polk County Museum Balsam Lake, Wisc.

Proposed New Addition - Elevator + Handicapped Restrooms

JLW 2005



1905

Aug '05
100 YEAR OLD VILLAGE
Village of Balsam Lake
POLK COUNTY, WISCONSIN

2005

W. R. Taylor-----1905-11
1914-19
C.S. Roberts-----1912
Alva Park-----1913
Willis C. Park-----1919-27
1934-35
Alton Ely-----1927-34
Walter Hansen-----1935-47

Hjalmer Holmberg-----1947-53
Millard Freeman-----1953-58
Frank Werner-----1959-64
James W. Moore-----1965-70
Guy R. Williams-----1971-92
Kathy Poirier-----1993-2002
Laura McKenzie-----2003-2005
Guy R. Williams-----2005



2005 Balsam Lake 4th of July Parade
Erling Jensen's Antique Car

Conservation is Preservation

Bringing together D. D. Kennedy Park and the Polk County Museum

Educational Program

The Friends of D. D. Kennedy Environmental Area and the Polk County Historical Society have put together an educational program. It will include a day that will teach children the importance of how learning about the past can help save our future and what conservation is and how it pertains to their lives.

The day of learning will start at the Polk County's Lanesdale Schoolhouse in Balsam Lake. The next stop in Balsam Lake will be a tour of the Courthouse Museum. The day will finish at the D.D. Kennedy Environmental located south of highway 8 in Garfield township.

The museum staff is working in conjunction with the Land and Water Resource staff to bring this day together.



Intern, Megan Olson, at Kennedy Environmental Area

Megan Olson, a third year River Falls History Major student, joined us at the Polk County Historical Museum in June this year. She came into the Museum with serving hands and immediately was put to work with Martha Filip and Marilyn Reiten. They began the needed changes in the general store room. The ending result was the theme where many would gather to purchase daily supplies for the family, from food to sewing material or it became a stopping point to play a friendly game of checkers and discuss the local news.

(continued)

Megan has been a bright spot with her smile and positive directions as she moved on to a more complex task of assisting me with the grant writing for the LASH (Land, Air, Soil and History) Program. Megan's visit of the Kennedy Park and time with J.P. Johnson and myself helped her to understand the connection of history of the Kennedy Mill and the preservation of Polk County History. Megan will wrap up her summer job with the museum by working on the audio guide system that Rey Lark will be installing this season. The audio guide system will be activated by motion sensors that will trigger narratives of interviews with Dan Mosay in the Native American room, Mark Biller in the Military room and Martha Filips in the Fine Arts room. Last but not least the 2nd Annual Style Show will include greeting cards and a special Red Hat Tote Bag designed by Megan.

DIRECTOR'S THOUGHTS

The 1931 Polk County Jail marquees are now on the north hillside of the museum property thanks to Tyler Bestline, Steve Kolve and Darrell Kittleson. Please stop and see the new look at the foot of the north hillside. We had a new addition to our eastside of the museum recently. This last week a tiger strip mamma cat and six kittens was discovered nestled under the heavy fencing by our workers, Tyler and Steve. Mother cat didn't like the thought of her privacy invaded so she promptly moved her kittens to a new secretive place.

Thank you:

Gene and Dorothy Ludack for donation of the Beanie Babies for use in fund raising,
Erling Jensen for use of antique cars in Balsam Lake and Luck parades,
Rick Yunker for mounting the rope on the Little Red Schoolhouse at the fairgrounds,
Amery Historical Society for setting up and hosting in the Little Red Schoolhouse.

Martha Filip and I changed the Underwear Display into a Hunting Clothes display in the main floor village.

Darcy Thompson's Underground Railroad Quilts and will be on display at the museum this month, as will a early 1900 vintage quilt made by the ladies of Bethesda Lutheran Church, Sand Lake.

We are requested to have our budget in to the county August 5th. We will allow funds for outside painting of eaves and the fire escape from the top floor to be done in the 2006 year. I will continue to request funds for the elevator/addition project. The first half of mailing for donations will go out the first of September.

Your Director, Rosalie

Polk County Fair Little Red Schoolhouse Report

One Thousand Seven Hundred and Forty Nine (1,749) visitors came to the Little Red Schoolhouse during Polk County's Fair, July 28 through 31!

I have never seen so much interest in the displays at the Schoolhouse over the years that I have been there for the annual exhibitions. This year's theme was "Rural Schools that Consolidated with the Amery School District" in the 1950's and 1960's, organized by the Amery Historical Society (AHS).

Amery's Harvey Stower dedicated the new belfry tower at noon on Saturday and the bell rang the first time at the fairgrounds, and probably the first time since Osceola schools quit using the building in 1957. Our Polk County Historical Society moved the 1858 building, considered the oldest school building in this area, in 1963 to its present location. Two former teachers (Rita Doll Creighton and Ann Jeans Steffen) and two former students (Curtis Schmidt was one) rang the bell. The bell tower, a replica of the original, was constructed by Larry Behne, helped by Darrell Kittleson, David Knutson, and Jim Gisch, and lifted in place by Steve Chouinard's Crane Service.

We owe a debt of gratitude to the Marion Park Deaver Foundation for funding this project. The late Mrs. Deaver, a native of Balsam Lake, took special interest in the county museum, particularly in any activities to further educational opportunities for Polk County's schoolchildren.

A highlight of the exhibit was the unexpected discovery in the old teacher's desk of a drawer containing the signatures of most of the teachers from the Largon Lake School District in McKinley Township. This added to the interest of visitors, as these same teachers taught in many other schools and their names were recognized. Many parents and grandparents brought their children and grandchildren to show how their forebears had attended school. The AHS group also had special photographic displays of some of the rural schools, which elicited a lot of interest as well as questions to the hosts. Marge Hallquist also exhibited her private collection of schoolbooks and other artifacts in the display cabinet.

Marlys Nelson of the AHS suggested the topic, AHS President David Knutson organized the event, and several members hosted at the Schoolhouse, including David, the Clarks, Harvey Stower, JoAnn Hallquist, and myself. It was a wonderful educational experience for the children and for the adults as well.

Marge Hallquist
For the Amery Historical Society
August 5, 2005

Excerpt from Harvey Stower's remarks:

This day, July 30, 2005,

We dedicate the bell tower of the Little Red Schoolhouse,

We give thanks to all the persons who constructed it and contributed to it.

We give thanks for all the teachers who rang this bell and the country school teachers, tax payers, board members, parents and students who learned life lessons and the value of education in country schools in Farmington Center and in all of Polk County.

Each time this bell shall ring again, let us remember the blessings of being an educated citizenry and those who made it possible. Thanks be to God.

The August meeting of the Polk County Historical Society Board met on August 3, 2005 5:45 at the Village Pizzeria in Amery. Members present were: LeRoy Schwann, Jim Gisch, Darrell Kittleson, Carl Johnson and President Muriel Pfeifer. Rosalie Kittleson, Director of the Museum was present.

There were no Secretary and Treasurer reports. Director Rosalie Kittleson reported on activities taking place at the museum.

Old Business:

Elevator fund projects:

- a. The second Brat Stand at Wal-Mart will be August 13 – A few additional people may be needed to man the stand.
- b. Red Hat High Tea – Muriel reported that invitations have been sent out. Members of the Historical Society may get their reservations in now. The cost is \$20.00. Send your checks to Muriel Pfeifer 625 Dickey Avenue South Amery, WI 54001. The deadline for reservations is August 30.

New Business:

1. Darrell made a motion to establish the following policy: When the temperature is 80 degrees or above, the exterior doors shall remain closed and fans used inside to move the air around. Exception is the front door (main street door) may be open to 4 inches maximum. If the fan upstairs is operating the upstairs door may be open. When the temperature is below 80 degrees, discretion is to be used. LeRoy seconded. Motion passed.
2. Polk County Fair 2006 – East Farmington School is being managed by Dave Knutson. Dave will send a letter asking an historical society to be responsible for the school in 2006. A donation box will be made available for visitors to make donations. The monies received will go to the organization in charge of the school that year. A record will be kept of the organization using the school.
3. A new By-law was written concerning historical societies under the umbrella of the Polk County Historical Society. See attached in the Newsletter. A vote will be taken at the September meeting.
4. Application to affiliate with the Society was received from the Luck Historical Society. A vote by the members of the Board of Directors will be held in August.
5. RoseMarie Braatz has a new book. Muriel will ask for a donation for the museum office.
6. Job Service Youth program ends on August 20. The students have done a wonderful job this summer and we would welcome them back.
7. Walter Brager, of the Deaver Foundation will be in Balsam Lake the early part of next week and plans on visiting the museum.
8. Jim Gisch had a list of items to be discussed by the board. Two were brought up at this meeting: An alarm system needs to be at each door so that we know when someone comes in. A donation of \$20 was given and the rest will come from the donations given at the door. Also we need an intercom/walkie-talkie to let the workers know when someone needs them.

Respectfully submitted,

Muriel Pfeifer,

Acting Secretary

ARTICLE XII

CHAPTERS

Chapters of the Polk County Historical Society may be organized into Polk County or elsewhere in the State of Wisconsin as integral parts of the corporate structure of the society in accordance with the following provisions:

- a. Any non-incorporated group of individuals wishing to form a chapter of the Polk County Historical Society shall submit a written application to the Board of Directors of the society. The application shall include the name of the chapter, its principal location, a statement of its specific goals and objectives, and a list of the names and addresses of its Organizers and shall be signed by a chapter chairman elected by the organizers.
- b. The Board of Directors shall act on the application at its next scheduled meeting or at a special meeting convened for that purpose, and the president of the society shall notify the chapter chairman of the action of the Board within seven days after action is taken. Reasons for probable deferral or rejection of the application shall be included in the letter.
- c. Within fourteen days of notice of acceptance the chapter president shall forward a list of the members of the chapter to the president of the society along with their addresses and phone numbers. Annually thereafter the chapter president shall submit a chapter membership roster on or before the last day of September of each year.
- d. The chapter president shall also submit an annual report on the activities of the chapter verbally at the annual meeting of the society or in writing addressed to the president of the society at least one week before the annual meeting and such report shall be entered on the minutes of the meeting. Failure to deliver such report shall be just cause for the Board of Directors to consider revocation of chapter status.
- e. Each chapter shall be autonomous in the conduct of its internal affairs, shall conduct its own meetings at places and dates of its own choosing, and shall elect its own officers. Such officers shall include a chapter president, a vice president, a secretary, and a treasurer except that the offices of secretary and treasurer may be combined into one office. The president of each chapter shall also be an ex officio member of the Board of Director of the county society and shall be entitled to attend its meetings.
- f. Each chapter shall cooperate with the county society in any of its activities or projects and shall host local meetings of the county society when called upon to do so whenever practicable. Conversely the county society shall cooperate with the chapters in their projects and activities to the extent that it is practicable to do so.
- g. Each chapter shall be self-supporting and may levy dues or assessments among its own members to meet its own expenses.